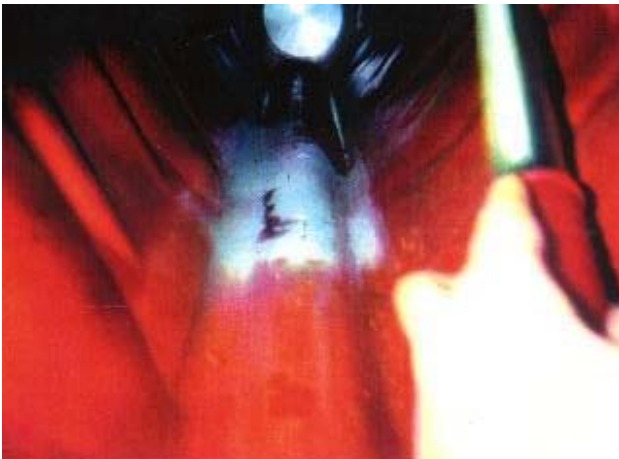




Worldwide repairs carried out with PolymerMetal®

REP-# 038



During the first run of a diesel locomotive's engine a shrinkage cavity in the casting was found above the engine block near the central lubrication. Oil was leaking from this cavity. The repair was carried out with MM-metal oL-steelceramic and Hardener yellow. After several test runs the repaired engine has been installed into a new diesel locomotive.

MultiMetall
the MetalExistenceCompany®