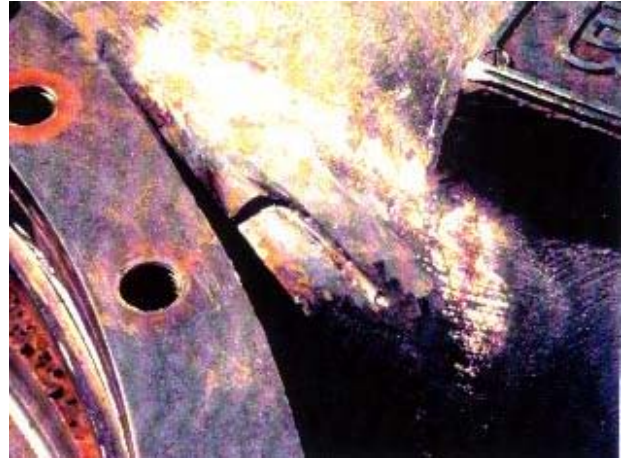




Worldwide repairs carried out with PolymerMetal®

REP-# 111



Repair of a water pump. Damage: a crack of approx. 15 cm length. Data of the pump: year of construction 1969, power: 1500 m³/h, material: GGG-40.3, working pressure 20-40 bar. The pump has been repaired with MM-metal SS-steelceramic, Hardener yellow and MM-Fabric tape (carbon). Several attempts to carry out the repair by conventional welding before failed.

MultiMetal
the MetalExistenceCompany®